

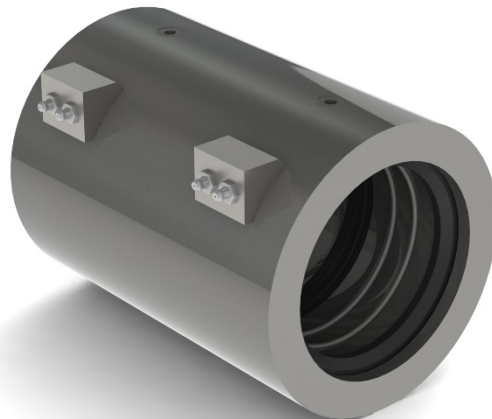
SRJ Coupling – Technical Datasheet

Intended use:

The SRJ Coupling is a weld-less pipe connector that enables two pipe ends to be joined without the traditional complexities associated with welded or flanged connections.

The coupling design permits easy and reliable pipe joining without any of the risks associated with hot work.

The coupling design inherently uses the contained pressure to seal the joint tighter.



Product features:

- Enables rapid hook-up of installation modules is possible without the need for arduous ‘golden-weld’ connections.
- Weld-free replacement of pipe spools during operations without the need for hot-work habitat.
- Standard material of construction is 4130 Carbon Steel but the product can be supplied A312 Stainless Steel.
- Available with double seal design and inclusion of interstitial pressure measurement tapping.
- Reusable units with replacement seals and wires.
- Integral environmental seal prevents ingress of dirt and moisture into the unit.

Technical specifications:

- Size range: nominal pipe diameters from 1¼” to 16” (32 mm to 400 mm)
- The coupling is type approved by Lloyds Register and ABS
- Coupling torsional and bending limits are in excess of associated connected piping
- Operating temperature range is governed by the elastomeric seal selected as appropriate
- Maximum operating pressure: refer to product line datasheet

Every effort has been made to ensure that the information contained in this publication is accurate at the time of publishing. This information is taken from controlled laboratory tests, and any information recorded is reflective of the material. Actual results may vary dependent on material usage. SRJ Technologies Ltd assumes no responsibility or liability for typographical errors or omissions or for any misinterpretation of the information within the publication and reserves the right to change without notice.

SRJ TECHNOLOGIES LTD
LE QUAI HOUSE
LE QUAI D'AUVERGNE
ST HELIER
JERSEY JE2 3TN
info@srj-technologies.com
www.srj-technologies.com



SRJ Coupling Product Line Datasheet

Table of SRJ Coupling design pressures – barg

Pipe Nominal Diameter	Schedule											
	40s	STD	40	60	80s	80	XS	100	120	140	160	XXS
1¼		149.7	149.7			209.5	209.5				283.1	466.2
1½	149.8	134.5	134.5		211.8	190.2	190.2				277.6	419.0
2	126.0	113.2	113.2		182.5	164.0	164.0				271.1	356.1
2½		124.0	124.0			172.2	172.2				241.3	375.6
3	119.6	107.5	107.5		169.6	152.3	152.3				230.2	328.8
3½		97.9	97.9			140.6	140.6					
4	101.3	91.0	91.0		146.8	131.9	131.9		174.3		215.7	281.7
5	88.8	79.7	79.7		131.3	117.9	117.9		160.3		204.3	250.1
6	80.6	72.4	72.4		126.8	113.9	113.9		150.6		196.7	241.0
8	70.9	63.7	63.7	81.0	112.0	100.6	100.6	120.4	147.6	168.5	189.8	182.7
10	64.3	57.8	57.8	80.0	89.0	95.5	80.0	116.8	138.5	166.3	189.0	166.3
12	55.5	49.9	54.1	67.0	74.6	93.2	67.0	115.5	138.5	157.1	185.6	138.5
14	50.4	45.3	53.0	72.6	67.7	92.6	60.9	117.0	137.8	159.2	180.7	
16	44.0	39.5	53.1	70.2	59.1	91.0	53.1	112.5	134.2	160.2	179.1	

SRJ Coupling design pressures - based on 4130 Carbon Steel or A312 Stainless Steel

Every effort has been made to ensure that the information contained in this publication is accurate at the time of publishing. This information is taken from controlled laboratory tests, and any information recorded is reflective of the material. Actual results may vary dependent on material usage. SRJ Technologies Ltd assumes no responsibility or liability for typographical errors or omissions or for any misinterpretation of the information within the publication and reserves the right to change without notice.

SRJ TECHNOLOGIES LTD
 LE QUAI HOUSE
 LE QUAI D'AUVERGNE
 ST HELIER
 JERSEY JE2 3TN
 info@srj-technologies.com
 www.srj-technologies.com

