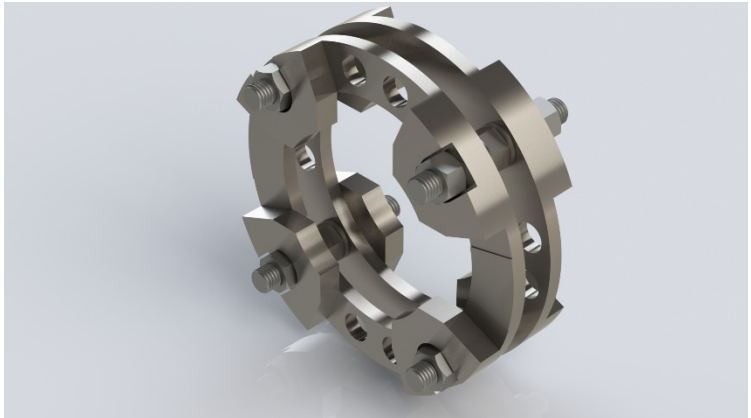


# **SRJ BoltEx – Flange Clamp – Technical Datasheet**

## **Intended use:**

The SRJ BoltEx is intended to facilitate safe flange bolt replacement during normal operations also known as 'hot-bolt' capability.

BoltEx can also give assurance in cases of degraded flange connections by providing flange reinforcement for extended periods.



## **Product features:**

- Designed to accommodate flange connections in alignment with ASME PCC 2, ASME VIII, and ASME B16.5
- Unique Gasket Protection System (GPS) ensures that flange gasket compression is maintained constant throughout; the flange remains sealed, the gasket undamaged.
- Compact and lightweight design allows simple installation by only 1 or 2 personnel.
- Reusable for multiple hot-bolt applications.
- BoltEx can remain installed to provide flange integrity assurance to next shutdown.

## **Technical specifications:**

- All flange sizes and ratings as per ASME B16.5 – see product line datasheet
- Operating temperature and pressure ranges in alignment with ASME B16.5

## BoltEx Product Line Datasheet

<b>BoltEx Product Type – Number of Bolts</b>							
<b>NPS (Inches)</b>	<b>Class</b>						
	<b>150</b>	<b>300</b>	<b>400</b>	<b>600</b>	<b>900</b>	<b>1500</b>	<b>2500</b>
<b>½</b>	4	4	4	4	4	4	4
<b>¾</b>	4	4	4	4	4	4	4
<b>1</b>	4	4	4	4	4	4	4
<b>1¼</b>	4	4	4	4	4	4	4
<b>1½</b>	4	4	4	4	4	4	4
<b>2</b>	4	8	8	8	8	8	8
<b>2½</b>	4	8	8	8	8	8	8
<b>3</b>	4	8	8	8	8	8	8
<b>3½</b>	8	8	8	8	N/A	N/A	N/A
<b>4</b>	8	8	8	8	8	8	8
<b>5</b>	8	8	8	8	8	8	8
<b>6</b>	8	12	12	12	12	12	8
<b>8</b>	8	12	12	12	12	12	12
<b>10</b>	12	16	16	16	16	12	12
<b>12</b>	12	16	16	20	20	16	12
<b>14</b>	12	20	20	20	20	16	N/A
<b>16</b>	16	20	20	20	20	16	N/A
<b>18</b>	16	24	24	20	20	16	N/A
<b>20</b>	20	24	24	24	20	16	N/A
<b>22</b>	20	24	24	24	N/A	N/A	N/A
<b>24</b>	20	24	24	24	20	16	N/A

The BoltEx product range is designed in direct alignment with ASME B16.5-2017 flange dimensions, pressure and temperature performance.

N/A occurs above when there is no equivalent standard flange.

Every effort has been made to ensure that the information contained in this publication is accurate at the time of publishing. This information is taken from controlled laboratory tests, and any information recorded is reflective of the material. Actual results may vary dependent on material usage. SRJ Technologies Ltd assumes no responsibility or liability for typographical errors or omissions or for any misinterpretation of the information within the publication and reserves the right to change without notice.

SRJ TECHNOLOGIES LTD  
LE QUAI HOUSE  
LE QUAI D'AUVERGNE  
ST HELIER  
JERSEY JE2 3TN  
info@srj-technologies.com  
www.srj-technologies.com

