

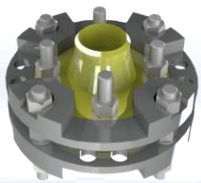


CONTAINMENT MANAGEMENT SOLUTIONS



We elevate our clients' integrity management **PERFORMANCE**
By combining cutting-edge containment **TECHNOLOGIES**
With engineering and operational **KNOW-HOW**

BoltEx Flange Clamp

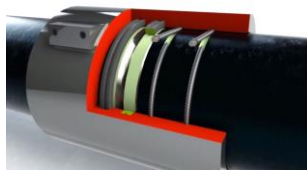


Safe online bolt
replacement

Flange reinforcement

No damage to flange
gasket

SRJ Weld-free Pipe Coupling



Weld-free pipe
connection

Spool tie-in or
replacement

Multiple configurations

Multi-Shell Repair Clamp

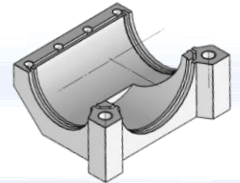


Emergency pipe
repair

Proactive application

Reusable and
compact to store

Bespoke Solutions



Enclosure repair
units

Composite wrap
solutions

Elbows, tees, flanges,
nozzles & valves

Multi-Shell Repair Clamp

- Size range: 3" to 12" outside diameter
- Sealing leaks at pressures of up to 50 barg
- Operating temperature range: -20 °C to +205 °C
- Available on short notice

INDUSTRY CHALLENGES

- Corrosion of piping systems
- Flange and weld failures
- Safety risks
- Costly repair works
- Shutdowns – Penalties
- Loss of containment – Loss of production



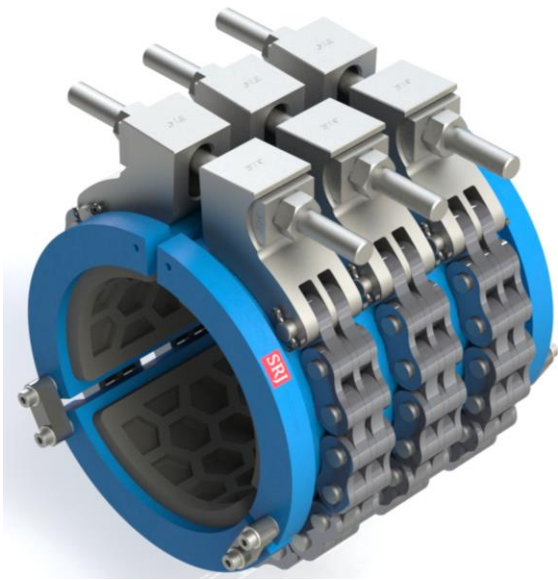
Multi-Shell Repair Clamp (MSRC)

EMERGENCY REPAIRS

MSRC is designed to arrest leaks on the piping systems, enabling a quick and effective containment management solution

PROACTIVE APPLICATIONS

MSRC can be installed on degraded piping systems to prevent the loss of containment on piping in critical condition



BENEFITS

Quick and safe to install

- + Available at short notice
- + No complex tooling required
- + Designed for fast and efficient installation and handling – complete installation in under 10 minutes (subject to available access)

Compact and reusable

- + Applicable to restricted locations
- + Easy to remove and reinstall multiple times
- + Reusable upon seal replacement
- + Compact folding arrangement enables space-efficient storage and transportation

Cost effective

- + Eliminates the need for plant shutdown
- + Extends asset lifetime and reduces maintenance costs

Innovative design sealing system

- + Multi-shell arrangement delivers enhanced clamping and sealing ability, and accommodates pipe ovality
- + Replaceable seal designed in a hex pattern for better performance
- + Maximised sealing properties due to reduced area in contact with the pipe surface